



**CRIAW
ICREF**

CANADIAN RESEARCH INSTITUTE
FOR THE ADVANCEMENT OF WOMEN
INSTITUT CANADIEN DE RECHERCHES
SUR LES FEMMES

August 19th, 1991

Dear

re:

We have the pleasure of notifying you (if you have not received prior notification), that your submission has been accepted for presentation at the CRIAW/ICREF Conference being held in Edmonton November 8-10, 1991. We have been overwhelmed by the response of women across the country regarding the conference receiving over 100 submissions on a wide variety of subjects.

The Program Committee is presently grouping the presentations into paper groups, workshops, round tables and panels. We are unable at this time to give you information on the pairing of your presentation as well as scheduling. We will be sending you a preliminary program at a later date.

Unfortunately, (for those of you who made the request), we are unable at this time to give you any indication as to whether or not we will be in a position to provide you with any financial assistance. A request for money has been made to help presenters defray costs of transportation and accomodation to "Social Sciences and Humanities Research Council of Canada" and we are expecting a response from them by October 1st, 1991. We must advise you however that this amount may be small and that we cannot at this time guarantee you any financial assistance. We suggest that your decision to attend and present be based on this consideration. If you are unable to attend for financial or any other reasons, we would most appreciate you letting us know as soon as possible so that we can adjust program planning accordingly.

...2

We have had some enquiries regarding registration. Yes, as a presenter, you are required to pay registration. You will find a registration package enclosed with this letter outlining details regarding registration fees as well as hotel and transportation arrangements.

We are looking forward to meeting you in November and if you should require any further information from us, please do not hesitate to call.

Yours sincerely,

Marcelline Forestier
Conference Coordinator

Noreen Bell
Associate Coordinator

CRIAW/ICREF CONFERENCE COORDINATOR
11043-90 Avenue
Edmonton, Alberta T6G 1A6
(403) 492-8950

(Please indicate below any changes, if any, from your original submission)

NAME(S):

TITLE OF PRESENTATION:

1. I am ____ am not ____ planning to attend and present at the conference.
2. I cannot attend for financial reasons _____
3. I will require the following audio-visual equipment for my presentation:

Please return this form as well as your registration to the above address as soon as possible and no later than September 15th, 1991. Thanks.



Le 19 août, 1991

**CRIAW
ICREF**

CANADIAN RESEARCH INSTITUTE
FOR THE ADVANCEMENT OF WOMEN
INSTITUT CANADIEN DE RECHERCHES
SUR LES FEMMES

Chère

au sujet de:

Nous avons le plaisir de vous aviser (si cela n'est pas déjà fait), que votre proposition a été acceptée pour présentation au colloque d'ICREF qui aura lieu à Edmonton du 8 au 10 novembre prochain. Nous avons reçu au-delà d'une centaine de soumissions portant sur toute une gamme de sujets.

Le Comité du programme travaille présentement à l'agencement des soumissions en groupes de communications, en table-rondes et en discussions de groupe. Nous ne pouvons pas à présent vous indiquer dans quel groupe vous allez vous trouver ni à quel moment du colloque que vous serez demandée de faire votre présentation. Nous comptons être en mesure de vous envoyer cette information sous forme de programme préliminaire d'ici quelques semaines.

Malheureusement, pour celles d'entre vous qui en avait fait la demande, nous ne pouvons pas présentement vous indiquer si nous pourrions vous offrir une aide financière. Une demande de fonds a été faite auprès du "Conseil de recherches en sciences humaines du Canada" afin de défrayer, en partie, les coûts de déplacement et d'hébergement des présentatrices. Nous ne recevrons pas de réponse avant le 1er octobre, 1991. Nous devons souligner que le montant reçu risque d'être minime et que nous ne pouvons pas vous garantir une aide financière. Nous vous demandons de prendre

...2

cette information en considération dans votre prise de décision par rapport à votre présence au colloque. Si vous ne pouvez pas assister au colloque, soit pour des raisons financières ou autres, nous vous demandons de nous aviser le plus tôt possible afin que nous puissions faire des ajustements au programme.

Enfin, nous vous avisons qu'en tant que présentatrice, vous devez aussi payer le frais d'inscription au colloque. Vous trouverez de l'information au sujet des tarifs d'inscription ainsi que les démarches à suivre par rapport au transport et à l'hébergement dans les documents ci-joints.

Nous avons hâte de vous rencontrer au mois de novembre et si vous désirez de plus amples renseignements, n'hésitez surtout pas de nous appeler.

M. Forestier

Marcelline Forestier
Coordonnatrice

Noreen Bell

Noreen Bell
Coordonnatrice associée

p.j.

COLLOQUE D'ICREF/CRIAW 1991
11043-90e avenue
Edmonton, Alberta T6G 1A6
(403) 492-8950

(Prière d'indiquer tout changement au nom ou au titre de votre présentation)

NOM(S):

TITRE DE VOTRE PRESENTATION:

1. Je vais _____ je ne vais pas _____ être présente au colloque.
2. Je ne peux pas m'y rendre pour des raisons financières _____
3. Voici ce dont j'aurai besoin comme équipement audio-visuel:

Vous êtes priée de nous rendre cette formule ainsi que votre inscription le plus tôt possible et pas plus tard que le 15 septembre.
Merci!

Letter to presenters with

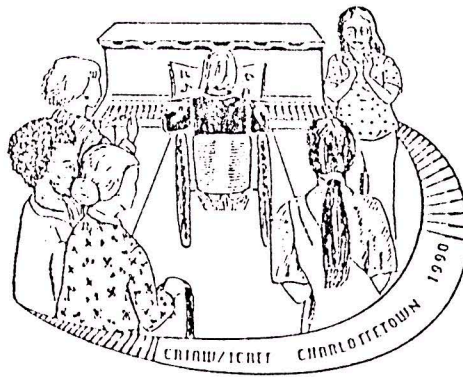
- registration forms
- Conditional on financing or not
- audio-visual needs
- some money is available through SSHRC

Letter to presenters:

- acceptance
- confirmation that you plan to present at conf.
- presenters must pay registration fees
- to date we cannot offer any financial assistance
- planning comm. requests your registration fee & form by Oct. 8th

- enclosed you will find registration forms
- registration hotel form
- list of other available accomodation
- spelling of name ; pto title of presentation
any change
- any a.v. needs or special needs

"The more we get together..."
14th Annual CRIAW Conference
P.O. Box 2271
Charlottetown, P.E.I.
CIA 8B9
(902) 368-4510



"Plus il y
14e
Cha

Letter to
presenters
with Registration
Package

(902) 368-4510

August 13, 1990

Dear

Enclosed you will find a registration package for our November conference. Included is a:

- brochure
- registration/special needs form
- registration card for CP Prince Edward Hotel
(location of conference)
- list of other available accommodation in the
Charlottetown area

There will be a more detailed program available at the conference. If you have any changes (titles, misspellings, etc.) to make for the final program, please send us your corrections/revisions by the end of September.

As yet, we have no confirmation of the available funds for assisting presenters and participants with travel and/or accommodation expenses. We have made applications for funding to several sources and hope to receive confirmation of amounts granted by mid-September. At that time, we will do our best to meet as many requests as we are able. It is our hope that we will be able to notify you of the exact amount available to you by the end of September.

The conference proceedings (paper sessions and panel presentations) will be published in book form, hopefully for release in the Spring of 1991. If you wish to have your presentation considered for inclusion in this publication, please submit a good quality clean copy of your complete paper to us at the conference. When you return your completed registration form, please notify us of any audio visual equipment you may require for your presentation.

I will keep in touch - please don't hesitate to phone if you have any questions or special requests.

Sincerely,

Anne Mazer
Conference Co-ordinator

Form letter to (12)
presenters
ACCEPTANCE

April 26, 1990

evaluation
of
proposals

Dear

This is to notify you that your submission of a proposal for presentation at the CRIAW/ICREF Conference '90 has been accepted by the PEI Planning Committee. This acceptance is pending the approval of the "draft program" by the CRIAW Board which will be meeting in mid June. You will receive notification of the final program after that date.

The program committee also requires the following information from you:

- * Confirmation that you plan to attend (and present) at the conference.
- * Is your attendance conditional upon your receiving financial assistance from CRIAW?
- * Are you physically disabled? (physically disabled presenters will be given first priority for financial assistance).

Please complete the attached form and return it to us as soon as possible.

Sincerely,

Anne Mazer
Conference Co-ordinator

CRIAW/ICREF Conference 1990 Program Commit
c/o P.O. Box 2271
Charlottetown, PEI
C1A 8B9

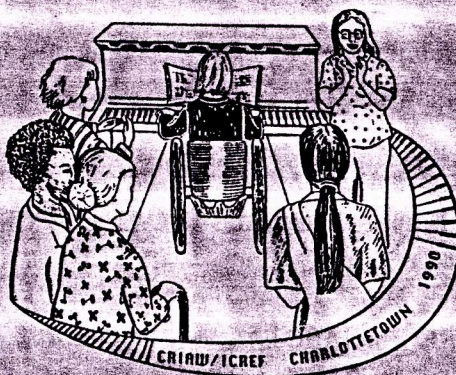
Form sent to ⁽¹³⁾
presenters with
letter of acceptance

Name: _____

Title of Presentation: _____

1. I am ___ am not ___ planning to attend and present at the conference.
2. My attendance at the conference is ___ is not ___ conditional upon my receiving financial assistance from CRIAW.
3. I am ___ am not ___ physically disabled.

"The more we get together..."
14th Annual CRIAW Conference
P.O. Box 2271
Charlottetown, P.E.I.
CIA 8B9
(902) 368-4510



"Plus il y
14e
Cha

CIA 8B9
(902) 368-4510

Letter to presenters⁽²²⁾
who had requested
financial assistance

October 3, 1990

Dear

Plans for the conference are rolling ahead and it is looking more exciting all the time. Unfortunately, Lina Chartrand's play, "Le Petite Miss Easter Seals", will not be on our program but it will be aired on CBC Morningside October 15, 17, 19 at 11:30 am (Toronto time). In Lina's place will be Bonnie Klein, film producer/director at NFB Studio D - two of her many films are, "Not a Love Story" and "Speaking Our Peace". Bonnie will be giving a workshop called, "Some Intersections of Feminism and Disability: Personal Narratives", in which she hopes to "explore questions relating to disability and feminism on the personal rather than theoretical level".

Another exciting addition to the program is Kate Sandilands from York University. Kate's paper is titled "Connectedness and Contradictions: Feminism, Ecology, and Difference" and will be presented in Paper Session E, "Women's Diversity II".

Our funding is slowly making its way to us and I am now able to give you information regarding the financial assistance you requested.

We are offering you a travel subsidy (unless you specifically requested assistance with accommodation or registration) based on Air Canada seat sale rates plus 10% tax from _____. That amount is _____ and will be reimbursed to you shortly after the conference. If you requested assistance with accommodation, we will be finding someone with whom you can share a room - if you have a roommate in mind please let us know.

(over)

PLEASE KEEP ALL RECEIPTS AS THESE WILL BE REQUIRED FOR REIMBURSEMENT ALONG WITH THE TRAVEL CLAIM FORM which will be included in your registration kit.

IF YOU NO LONGER REQUIRE FINANCIAL ASSISTANCE OR YOU DO NOT NEED ALL OF THE ABOVE AMOUNT, PLEASE NOTIFY US AS SOON AS POSSIBLE SO WE CAN USE THESE FUNDS TO HELP ANOTHER WOMAN WHO MAY BE IN NEED OF FINANCIAL SUPPORT.

We have had some enquiries regarding registration. Yes, as a presenter you are required to pay registration. The full conference fee covers the cost of:

- Fri. eve. refreshments
- Sat. am & pm nutrition breaks
- Sat. luncheon
- Sat. dinner/banquet
- Sun. am nutrition break
- Sun. lunch

and meeting room rental.

There are 3 rates - CRIAW member (100.00), non-member (125.00), and low rate (80.00). "Partial rates" do not cover meals. The hotel has agreed to move the room registration deadline up to November 3. The planning committee requests your registration fee and form by October 25.

Looking forward to hearing from you soon.

Sincerely,

Anne Mazer
Conference Co-ordinator